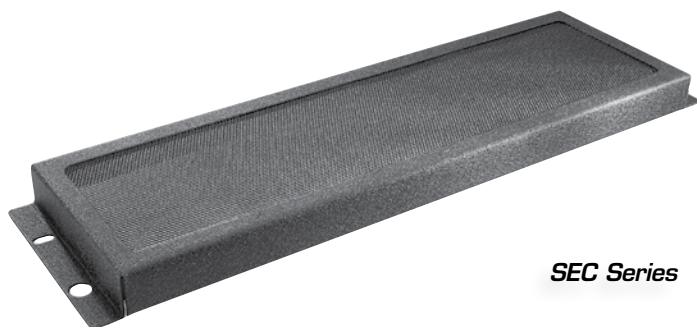




Accessory Panels for Racks

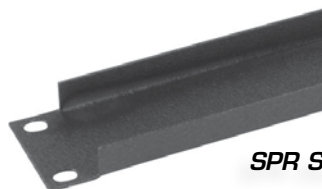
Security, Solid, Perforated, & Attenuator Panels for 19" Wide Racks



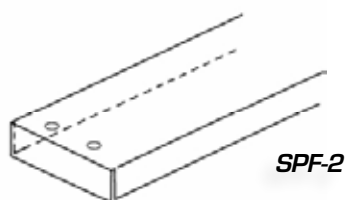
SEC Series



CB Series



SPR Series



SPF-2

Features

- Atlas Sound Panels Provide Aesthetic Continuity and Security for Unfilled Cabinet Spaces
- Solid, Perforated, and Security Cover Models Offer Dust Protection and Meet Heat Ventilation Requirements
- Offered in a Variety of Panel Space Heights to Fit Most Cabinet Openings
- All Models Include Oblong Mounting Holes on E.I.A. Universal Spacing for Adjustment Flexibility
- Stocked in Textured Black Epoxy

Security Covers

SEC Series Security Covers. Designed to eliminate unauthorized operator tampering to rack mount equipment such as equalizers and rack mount mixers. 22-gauge construction features fine perforated steel insert for good visibility. Unique radiused corners provide a professional looking installation. Formed edges protect equipment from scratches. Available in 1RU to 3RU heights.

| Models For 19" W Cabinets | Rack Unit | Panel Space | Depth |
|---------------------------|-----------|-------------|-----------------|
| SEC1 | 1RU | 1¼" (44mm) | 1.06" (26.92mm) |
| SEC2 | 2RU | 3½" (89mm) | 1.06" (26.92mm) |
| SEC3 | 3RU | 5¼" (133mm) | 1.06" (26.92mm) |

Blank Panels

CB Series. Economy solid steel panels are constructed of #14 steel finished in attractive -052 flat black electrostatic powdercoat.

| Models For 19" W Cabinets | Rack Unit | Panel Space | Depth |
|---------------------------|-----------|-------------|-----------------|
| CB1 | 1RU | 1¼" (44mm) | .625" (15.88mm) |
| CB2 | 2RU | 3½" (89mm) | .625" (15.88mm) |
| CB3 | 3RU | 5¼" (133mm) | .625" (15.88mm) |
| CB4 | 4RU | 7" (178mm) | .625" (15.88mm) |

Solid Blank Panels

Solid 16-gauge CRS panels (⅛" thick) are available in recessed and flush mounting models, respectively. The SPR Series has formed returns on the top and bottom for recessed installation. The SPF-2 is formed on all four sides for a flush appearance with respect to cabinet surface.

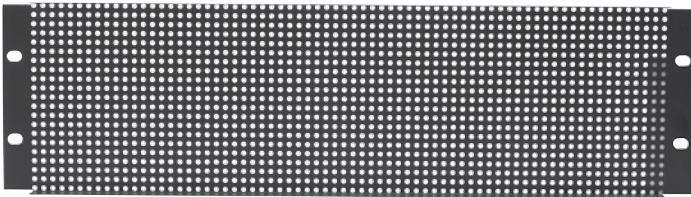
Recessed

| Models For 19" W Cabinets | Rack Unit | Panel Space | Depth |
|---------------------------|-----------|--------------|-----------------|
| SPR1 | 1RU | 1¼" (44mm) | .625" (15.88mm) |
| SPR2 | 2RU | 3½" (89mm) | .625" (15.88mm) |
| SPR3 | 3RU | 5¼" (133mm) | .625" (15.88mm) |
| SPR4 | 4RU | 7" (178mm) | .625" (15.88mm) |
| SPR5 | 5RU | 8¾" (222mm) | .625" (15.88mm) |
| SPR6 | 6RU | 10½" (267mm) | .625" (15.88mm) |
| SPR7 | 7RU | 12¼" (311mm) | .625" (15.88mm) |
| SPR8 | 8RU | 14" (356mm) | .625" (15.88mm) |

Flushed

| Models For 19" W Cabinets | Rack Unit | Panel Space | Depth |
|---------------------------|-----------|-------------|-----------------|
| SPF2 | 2RU | 3½" (89mm) | .625" (15.88mm) |

©2011 Atlas Sound L.P. All rights reserved. Atlas Sound and Strategy Series are trademarks of Atlas Sound L.P. All other trademarks are the property of their respective owners. ATSO01312 RevC 7/11



PPR Series

Perforated Vent Panels

PPR/PPF Series. These 22-gauge CRS perforated panels provide for natural air circulation and dissipation of equipment-generated heat in 19" wide equipment cabinets. The PPR Series is formed on panel top and bottom for recessed installation. The PPF Series is formed on four sides to achieve flush appearance.

Recessed

| Models For 19" W Cabinets | Rack Unit | Panel Space | Depth |
|---------------------------|-----------|--------------|-----------------|
| PPR1 | 1RU | 1¼" (44mm) | .625" (15.88mm) |
| PPR2 | 2RU | 3½" (89mm) | .625" (15.88mm) |
| PPR3 | 3RU | 5¼" (133mm) | .625" (15.88mm) |
| PPR4 | 4RU | 7" (178mm) | .625" (15.88mm) |
| PPR5 | 5RU | 8¾" (222mm) | .625" (15.88mm) |
| PPR6 | 6RU | 10½" (267mm) | .625" (15.88mm) |
| PPR7 | 7RU | 12¼" (311mm) | .625" (15.88mm) |
| PPR8 | 8RU | 14" (356mm) | .625" (15.88mm) |

Flushed

| Models For 19" W Cabinets | Rack Unit | Panel Space | Depth |
|---------------------------|-----------|-------------|-----------------|
| PPF2 | 2RU | 3½" (89mm) | .625" (15.88mm) |



ATPLATE-052

ATPLATE-052

ATPLATE-052 is perfect for rack mount applications where attenuators are required. The Atlas Sound ATPLATE-052 is a 2RU high #14 gauge plate pre-punched to accommodate up to (6) Atlas Sound RM attenuators. Attractive black filler plugs are provided for applications where the ATPLATE-052 will not be fully loaded. Please note that dial scales are included with Atlas Sound RM series attenuators, however for convenience, (6) additional dial scales are included with the ATPLATE-052. This allows the contractor to stock only standard single gang plate Atlas Sound attenuators which can be modified for use with the ATPLATE-052 by simply removing the single gang stainless steel plate. The ATPLATE-052 is finished in flat black epoxy to better blend in with other rack mount equipment.

Rack Mount Attenuators

| Model | Power |
|----------|-----------|
| AT10-RM | 10 Watts |
| AT35-RM | 35 Watts |
| AT100-RM | 100 Watts |