

# Gen-IC Virtual Intercom

## Virtual Intercom



## Key Features and Benefits

### Gen-IC Virtual Intercom

- Worldwide Intercom Service by Clear-Com
- Agent-IC & Station-IC Virtual Clients
- LQ Analog & Virtual Interfaces
  - 2-wire, 4-wire, GPIO, I.V. Direct (IVC), SIP

### I.V. Core Technology

- Decentralized audio mixing & routing
  - Channels: 24
  - Transports: Call, RMK, Control Events
- Globally Linked or Regional Deployment
- Adjustable low latency Opus codec per port

### Gen-IC Supports

- Virtual Intercom
  - Fully virtual multi-channel intercom
- Hybrid Intercom
  - Virtual Clients for on-site systems
- Bridging Intercom
  - Multiple sites
  - Without specialized hardware or networking

### Gen-IC Essential

#### Virtual Intercom

- Up to 12 Channels
- From 8 to 144 Agent-IC/Station-IC
- Up to 6 Linked Gen-IC
- As: Weekly, Monthly, or Annual Subscription

### Gen-IC Premium

#### Hybrid- & Bridging Intercom

- Up to 24 Channels
- From 8 to 384 Agent-IC/Station-IC
- Up to 6 Linked Gen-IC/LQ
- Up to 80 LQ Interface Ports
- As: Weekly, Monthly, or Annual Subscription

### Configuration

- CCM browser setup, config & status

### SkyPort Administration Portal

- Gen-IC Purchases
- Workspaces for Gen-IC & LQ
- User & Credential Management

Gen-IC Virtual Intercom services enable real-time partyline workflows, using Agent-IC and Station-IC Virtual Clients. Scalable for small to large teams with optional LQ interfacing for on-site intercom systems.

## Description

Gen-IC Virtual Intercom is a Clear-Com cloud hosted subscription service enabling 24 channel partyline deployments worldwide over the internet without dedicated intercom hardware or network requirements. Agent-IC and Station-IC Virtual Clients facilitate the intercom user using their mobile device or computer with multiple intercom channels, each with dedicated talk, listen, and level control in addition to visual call signals and device notifications. Gen-IC is scalable for small to large teams with low latency, operational robustness, and ease of use. Gen-IC can optionally be integrated into on-premises intercom and audio systems or peripherals using LQ interfaces.

## Technical Specifications

### Compatibility

LQ Interfaces v5.1+  
Agent-IC v2.10+  
Station-IC v1.6+

### Licenses

**Delivery:** Subscriptions delivered to SkyPort

**License Host:** SkyPort

**Activation:** Via SkyPort

**Validity:** Duration of a Committed Subscription.  
Starts with Activation

**Duration:** 1 Year/Month with Initiation – Auto renewal if not cancelled

**Transferable:** Yes, via SkyPort Workspaces and user management

**Recovery:** Contact Clear-Com

**Note:** Gen-IC user capacity can be used with Agent-IC or Station-IC. Additional licensing for Agent-IC or Station-IC is not required.

### Network Specifications | Release 1 +

Gen-IC & LQ Link Groups

### Network Protocols

Ethernet IPv4–Unicast Audio and Control  
Layer 3 routable

DNS – Domain Name Server

HTTP & HTTPS–Management

NTP–Network Time Protocol

I.V. Core–Decentralized Network Routing & Mixing

IVP–Proprietary intercom Audio and Control

Opus–Audio Codec

### Unicast:

Port 80 TCP – Web Interface, System Management

Port 443 TCP – Web Interface, System Management

Port 655 TCP – Link Group Member Registration

Port 655.... (random\*) TCP – Link Group Communication

Port 655... (random\*) UDP – Link Group Audio

Port 6001... (random\*) TCP – System Management

Port 6001... (random\*) UDP – IVP Audio Streams

### Multicast:

None

### Audio

**Resolution:** 12, 24 bit

**Sample Rate:** 24, 48kHz

**Frequency Response:** 100 - 12kHz or 100 - 20kHz

**Audio Encoding:** Opus

### Network Parameters

Custom on LQ or preset settings

### Bandwidth:

0.04-0.10Mb/s per output

**Bit Rates:** 16, 32, 48, 64, 128kbps

**Packet Size:** 5, 10, 20, 40, 60ms

### Network Jitter Tolerance:

Custom or preset settings

**Jitter Buffers:** 0 - 1000ms

### QoS Tags:

DSCP=34, Assured Forwarding (AF=41)

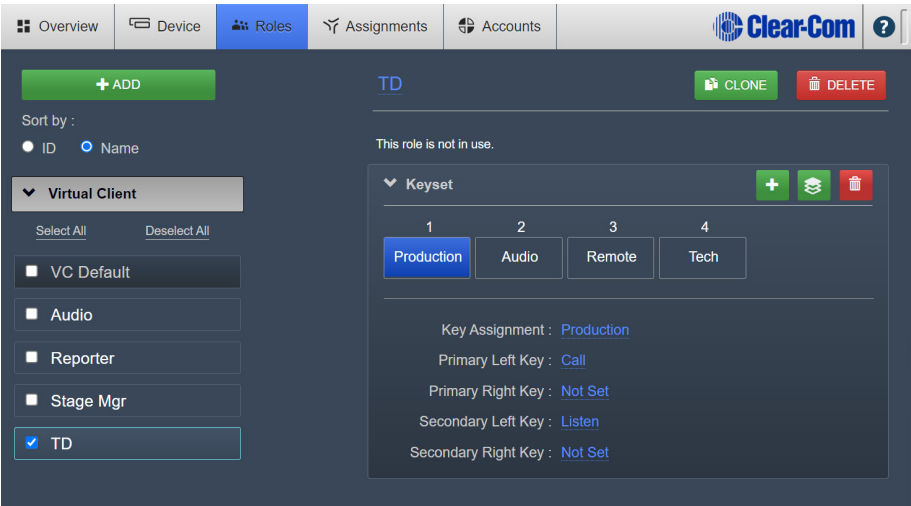
### Mandatory:

Google Service Access

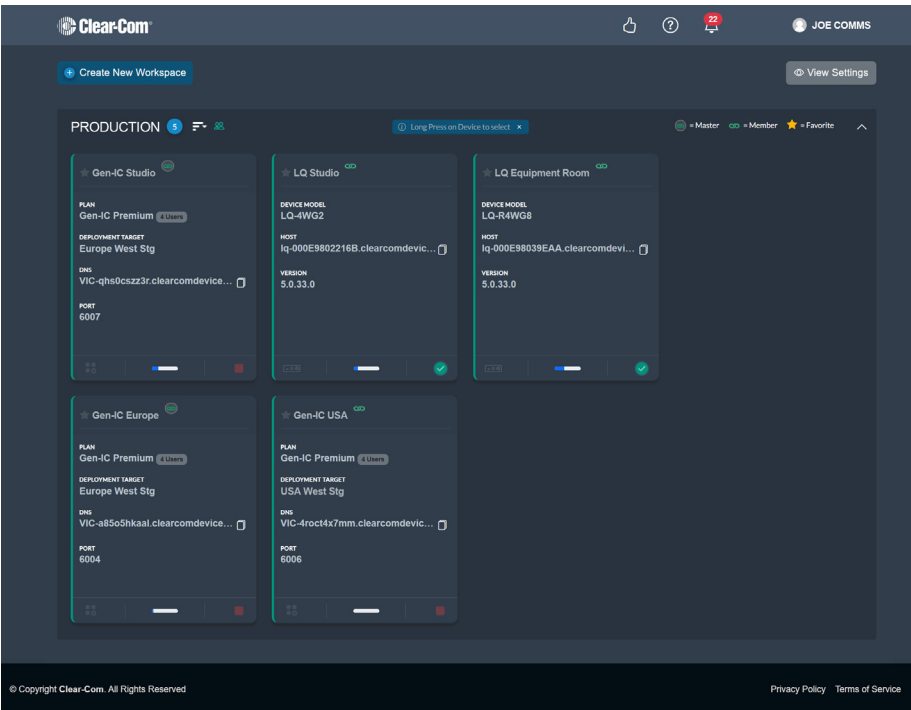
\*Ports are automatically assigned upon system start. See Gen-IC CCM

# Gen-IC Virtual Intercom

## Virtual Intercom



Gen-IC CCM



SkyPort

## Order Codes

### Gen-IC Essential: Virtual Intercom

GEN-IC-ESS-4U-W: 4 users for 1 Week  
GEN-IC-ESS-4U-M: 4 users for 1 Month  
GEN-IC-ESS-4U-Y: 4 users for 1 Year  
GEN-IC-ESS-8U-W: 8 users for 1 Week  
GEN-IC-ESS-8U-M: 8 users for 1 Month  
GEN-IC-ESS-8U-Y: 8 users for 1 Year  
GEN-IC-ESS-12U-W: 12 users for 1 Week  
GEN-IC-ESS-12U-M: 12 users for 1 Month  
GEN-IC-ESS-12U-Y: 12 users for 1 Year  
GEN-IC-ESS-16U-W: 16 users for 1 Week  
GEN-IC-ESS-16U-M: 16 users for 1 Month  
GEN-IC-ESS-16U-Y: 16 users for 1 Year  
GEN-IC-ESS-24U-W: 24 users for 1 Week  
GEN-IC-ESS-24U-M: 24 users for 1 Month  
GEN-IC-ESS-24U-Y: 24 users for 1 Year

### Gen-IC Premium: Hybrid- & Bridging Intercom

GEN-IC-PREM-4U-W: 4 users for 1 Week  
GEN-IC-PREM-4U-M: 4 users for 1 Month  
GEN-IC-PREM-4U-Y: 4 users for 1 Year  
GEN-IC-PREM-8U-W: 8 users for 1 Week  
GEN-IC-PREM-8U-M: 8 users for 1 Month  
GEN-IC-PREM-8U-Y: 8 users for 1 Year  
GEN-IC-PREM-12U-W: 12 users for 1 Week  
GEN-IC-PREM-12U-M: 12 users for 1 Month  
GEN-IC-PREM-12U-Y: 12 users for 1 Year  
GEN-IC-PREM-16U-W: 16 users for 1 Week  
GEN-IC-PREM-16U-M: 16 users for 1 Month  
GEN-IC-PREM-16U-Y: 16 users for 1 Year  
GEN-IC-PREM-24U-W: 24 users for 1 Week  
GEN-IC-PREM-24U-M: 24 users for 1 Month  
GEN-IC-PREM-24U-Y: 24 users for 1 Year  
GEN-IC-PREM-32U-W: 32 users for 1 Week  
GEN-IC-PREM-32U-M: 32 users for 1 Month  
GEN-IC-PREM-32U-Y: 32 users for 1 Year  
GEN-IC-PREM-48U-W: 48 users for 1 Week  
GEN-IC-PREM-48U-M: 48 users for 1 Month  
GEN-IC-PREM-48U-Y: 48 users for 1 Year  
GEN-IC-PREM-64U-W: 64 users for 1 Week  
GEN-IC-PREM-64U-M: 64 users for 1 Month  
GEN-IC-PREM-64U-Y: 64 users for 1 Year

Gen-IC is available on Clear-Com's SkyPort:  
[skyport.clearcom.com](https://skyport.clearcom.com)

**Note:** Gen-IC user capacity can be used with Agent-IC or Station-IC. Additional licensing for Agent-IC or Station-IC is not required.