

MM-120-Z

120 lb. WLL

OUTDOOR PAN & TILT SPEAKER MOUNT

MULTIMOUNT®

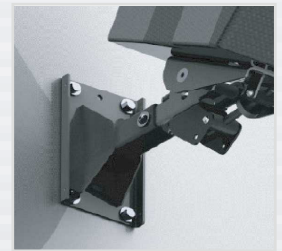


The MM-120 Speaker Mount supports speakers from its back and bottom or top panel, weighing up to 120 lb., and is fully adjustable in both pan and tilt aiming, plus comes with a telescoping wall arm to adjust the relative distance between the speaker and the wall.

This design accommodates weatherized speakers that offer four-hole mounting patterns on the back or bottom panel of the speaker. (See dimensions section.)

This mount is exceptionally easy to install and use with large format loudspeakers. They are safe and offer greater than 5:1 design factor.

The MM-120's unique telescoping arm acts as a convenient carrying handle to lift speakers into place then inserts into the wall mounting plate. Once inserted, the mounting plate supports the weight of the speaker leaving the installer's hands free to complete the wiring and aiming process.



STANDARD FEATURES:

- ▶ Outdoor non-marine rating
- ▶ Infinite screw-drive tilt adjustments.
- ▶ Pan angle secured by clutch style lock.
- ▶ Mounts to walls studs or optional stud plate.
- ▶ Telescoping arm secures in three positions.
- ▶ Adapts to 4 hole mounting patterns including 3-7/16 x 6-7/8 and 2-3/4 x 5 inch VESA pattern.

OPTIONAL ACCESSORIES:

- ▶ Safety Cable kits (See data sheets)
- ▶ PM-010 Pole Mount

SPECIFICATIONS:

Materials: Structural Steel Alloy

Finish: Zinc Plate

Color: Silver

Tilt Adjustment: 45 degrees

Swivel Adjustments: 180 degrees

WLL: 120 lbs. (45 Kg) max.

Design Factor: 5:1 ratio

Net wgt: 11 lbs. (5 Kg) each

Shipping wgt: 13 lbs. (5.9 Kg) each

Pack Count: 1 per carton

PACKAGE CONTENTS:

1 pc. Speaker Adapt Assy

1 pc. Wall Mount

1 pc. Extension Tube

1 Set hardware kit

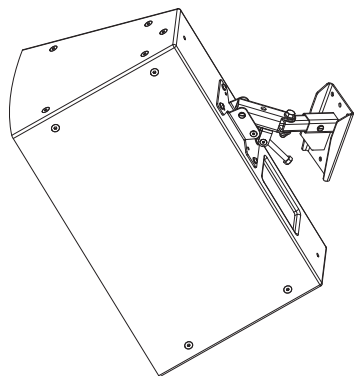
MM-120-Z

120 lb. WLL

OUTDOOR PAN & TILT SPEAKER MOUNT

MULTIMOUNT®

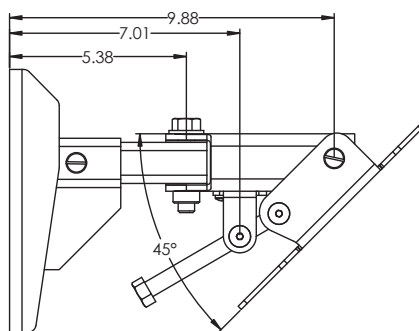
Attaching to Back of Speaker



Rear Mount
R-Position

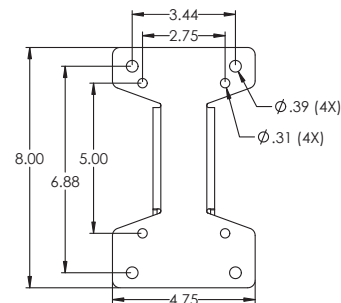
DIMENSIONS:

Side Views



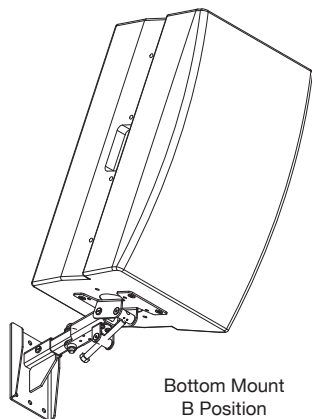
Vertical to 45°

Front Views

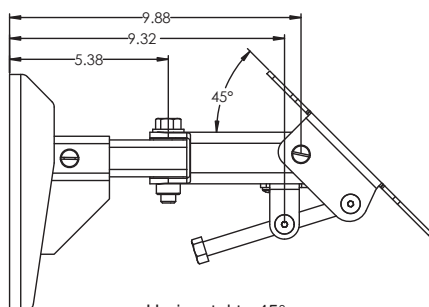


Speaker Mount

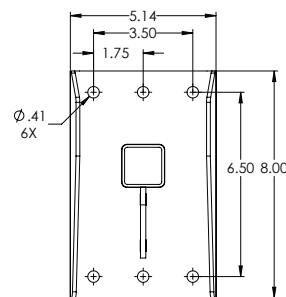
Attaching to Bottom of Speaker



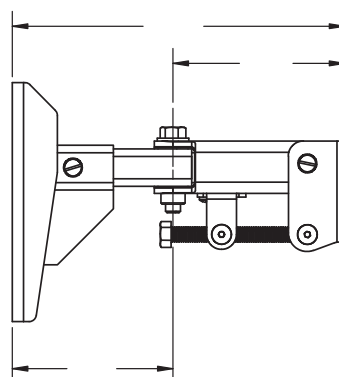
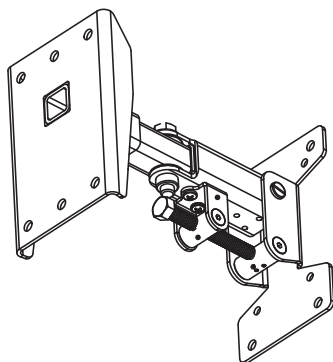
Bottom Mount
B Position



Horizontal to 45°



Wall Mount



Side View