

PM-24-6UP-G

200 lb WLL

OUTDOOR SPEAKER MOUNTING SYSTEM

PoleStar®

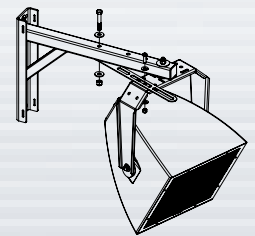


Galvanized UniFrame

The UniFrame is a complete mounting solution for outdoor loudspeakers. This outdoor mount safely secures to round poles and columns using stainless steel banding. The complete kit reduces the amount of parts and saves installation time. Its support arm accepts the yoke of one outdoor loudspeaker. Three different mounting points allow positioning away from the pole and provide a variety of tilt geometries.

Stainless steel band kits are available in different lengths, each with a breaking strength of over 5,000 lb. / 2273 kg, accommodating pole diameters starting at 6" (152mm). PoleStar mounts and band kits install with a socket wrench. Call Customer Service when the selected pole is larger than 24" in diameter. For pole diameters between 2" and 6", Select the PM-24-6DOWN-G.

Expand the installation to three loudspeakers by installing the PoleStar Dual Adapter, PM-DA-48-G. This adapter bolts to the UniFrame and creates two additional speaker attach points at each end of the adapter (see image below).



**Pan Lock Bracket
Kit Included**

STANDARD FEATURES:

- ▶ Uni-Frame for added strength and reduced install time
- ▶ Pan Locking Bracket included
- ▶ Rugged outdoor galvanized finish to ASTM A123 and ISO1461 specifications.
- ▶ Three arm mounting points to accommodate all speaker models.
- ▶ Support arm may be rotated up or down for installation flexibility.
- ▶ Dual adapter option for two and three speaker installations.

OPTIONAL ACCESSORIES:

- ▶ See next page

SPECIFICATIONS:

Material: Steel Alloy
Finish: Galvanized
Color: Silver
WLL: 200 lb / 90 Kg single speaker
WLL: 300 lb / 136 Kg total for 3 speakers of equal weight
Design Factor: 10:1 ratio

*WLL = Working Load Limit

CONTENTS:

1pc: Uni-Frame Arm
1 set: Hardware Kit
1 set: Pan Lock Kit



Rated for outdoor use.

1-Way Mounting



For 6" Diameter Poles & Larger

2-Way Mounting



For 6" Diameter Poles & Larger

3-Way Mounting



For 6" Diameter Poles & Larger

Safety Anchor



Recommended Option

Adaptive Technologies Group
1635 E. Burnett Street | Signal Hill, CA 90755 USA
Ph: 562.424.1100 | Fax: 562.424.3520
www.adaptivetechnologiesgroup.com



ALWAYS INSTALL SAFETY CABLES

WARNING: Mounting and/or suspension of audio and video equipment requires experienced professionals. Improperly installed loudspeakers can result in property damage, personal injury and/or liability to the installing contractor.

PM-24-6UP-G

200 lb WLL

OUTDOOR SPEAKER MOUNTING SYSTEM

PoleStar®

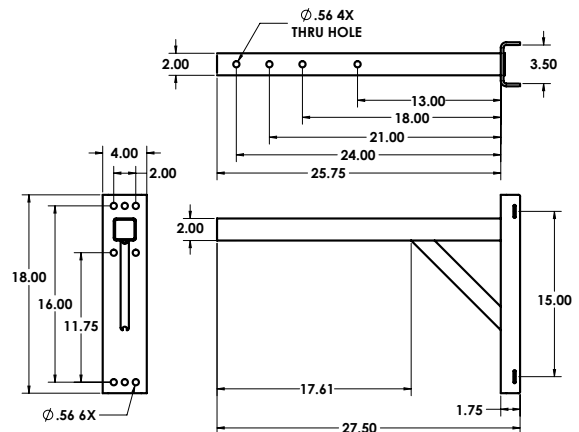
Uniframe Mount

This all-tubular steel frame accommodates loudspeakers equipped with a yoke and is galvanized for outdoor use. This model is designed to be mounted to any vertical 6" diameter round pole or greater.

Two sets of slots on the sides of the mount receive stainless steel banding straps that secure the mount to the pole.

Three separate through-holes in the mount's arm allow the installer to set the distance and tilt angle of the speaker and yoke, relative to the pole.

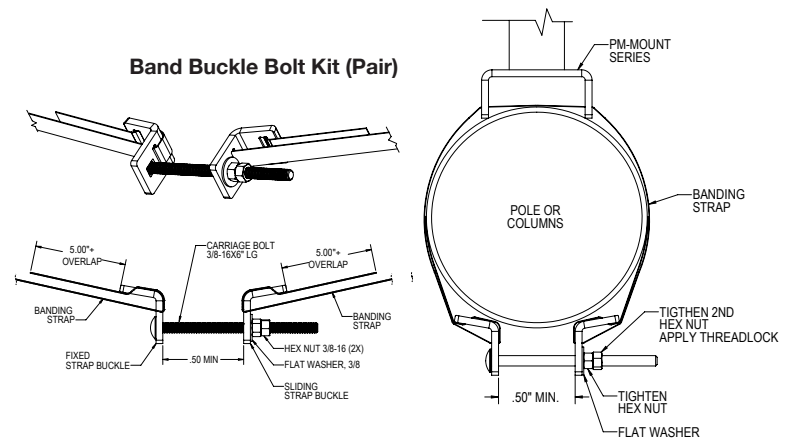
A fourth hole allows for the installation of the pan lock bracket that helps avoid altering the speaker angle during high winds.



Pole Band Kits (Optional)

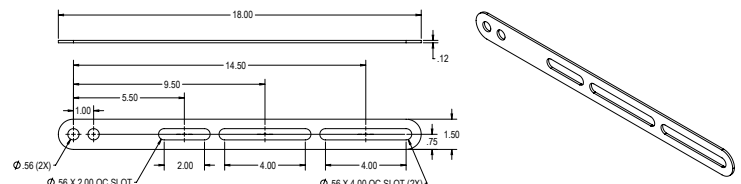
PM-SB-BAND-30 For poles 4"-6" diameter
PM-SB-BAND-60 For poles 6"-12" diameter
PM-SB-BAND-90 For poles 12"-24" diameter
PM-SB-BAND-120 for poles 24"-32" diameter

Two stainless steel bands, four stainless buckles and related hardware are included in this kit and will accommodate poles and column diameters between 6" (152mm) to 24"/610mm). The unique bolt kit requires only a socket wrench to secure and tension bands by hand. No special tools or equipment necessary. The 201 stainless band material is easy to work with, offers high strength, a clean appearance and good resistance to oxidation and weathering. **Contact customer service for pole diameters larger than 32" / 810mm.**



Panlock Link Bar (Included)

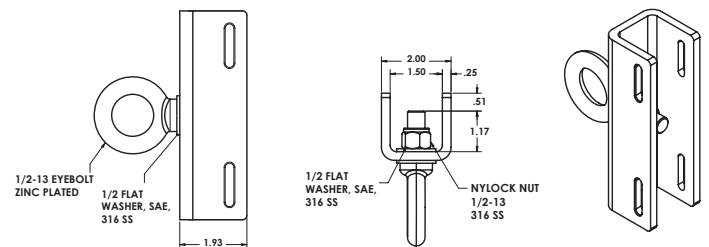
This stainless steel pan-lock bracket secures to the mount's arm and to the speaker's yoke bracket to prevent the speakers pan angle from shifting in high winds. Drilling a 1/2" diameter hole in the yoke may be necessary if a mounting hole is not already available.



Pan Angle Locking Bracket

Safety Anchor (Optional) / PM-SAFETY-6DOWN

This weatherized pole anchor is a recommended option when the selected pole or column does not already offer a safety attach point. This Safety Anchor provides a load-rated pole attachment and designed to be installed on poles that are 2" in diameter and larger, serving as a redundant safety back-up in the event of a mount failure. This Anchor requires a pair of band kits and one safety cable, which are sold separately. Select the PM-Safety-6DOWN-SS for marine environments.



Pole Mounted Safety Anchor

Adaptive Technologies Group

1635 E. Burnett Street | Signal Hill, CA 90755 USA
Ph: 562.424.1100 | Fax: 562.424.3520
www.adaptivetechologiesgroup.com



ALWAYS INSTALL SAFETY CABLES

WARNING: Mounting and/or suspension of audio and video equipment requires experienced professionals. Improperly installed loudspeakers can result in property damage, personal injury and/or liability to the installing contractor.



Rated for outdoor use.