

BG-2480D-AM

MIXER AMPLIFIER



The BG-2480D is a powerful 480W 5 input mixer amplifier; designed for background music and general announcements. Its lightweight and compact case and high efficiency amplifier output make it a desirable addition to a new or upgraded system. The Amplifier output is 480W @ 4ohm, 70V and 100V. RCA jacks provide for Line 2 and 3 inputs for quick connection. The BG-2480 is an enhances the already dominant BG series of amplifiers.

Key features

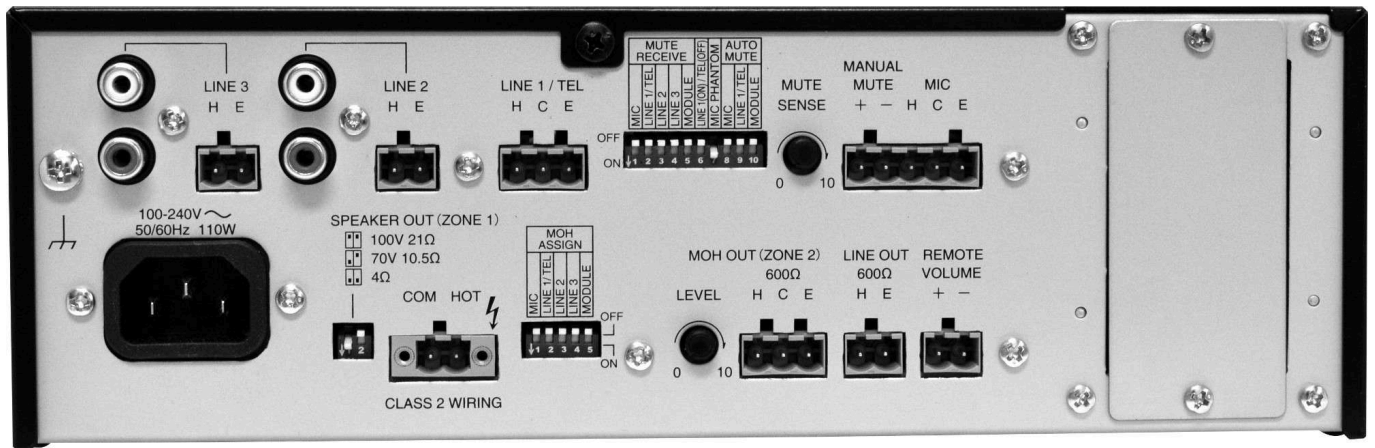
- Lightweight and compact digital amplifier with high-efficiency amplifier output. Amplifier output: 480W @ 4Ω, 70V, 100V.
- Automatic or manual mute function.
- Easy DIP switch settings;
 - MOH (secondary) output assignment for each input
 - Mute setting
 - LINE 1/TEL level setting
 - Phantom power ON/OFF setting
- Bass and treble equalization controls on the front panel.
- Removable input/output terminal blocks for easy wiring.
- RCA jacks provided for Line 2 and 3 inputs for quick connection.
- External remote volume control input for localized volume adjustments.
- Accessory security covers for front volume control knobs to prevent accidental adjustments

Specifications

*0 dB = 1 V

Power Source	100-240V AC, 50/60Hz
Rated Output	480W
Power Consumption	600W (rated output), 110W(based on UL 60065 standards)
Frequency Response	50Hz- 20kHz(LINE)
Total Harmonic Distortion	0.8% or less at 1kHz, 1/3 rated output
Signal to Noise Ratio	Mic: Over 60dB , Line 1/ TEL, Line 2, 3, Module: Over 80dB (A-Weighted);(Tone Controls: Centered)
Input	Mic: -60dB*, 600Ω, electronically balanced, removable terminal block
Output	Speaker: Lo-z(4Ω), 70V(10.5Ω), 100V(21Ω), balanced, removable terminal block MOH: 0dB*, 600Ω, balanced, removable terminal block
Output Regulation	2dB or less, no load to full load (1 kHz)
Phantom Power	On/Off switch for Mic, +24V DC
Tone Control	Bass: ±10dB at 100Hz, Treble: ±10dB at 10kHz
Muting	Manual mute/Automatic mute
Control	Mic gain control, Line 1/ TEL gain control, Line 2 gain control, Line 3 gain control Module gain control, Bass tone control, Treble tone control, MOH out gain control Mute control (Manual mute), Remote volume control, Mute sensitivity control Line 1/ TEL selector switch, Phantom power switch (Mic)
Indicator	Power LED, Signal level LED, Peak LED
Cool method	Fan cool
Other Feature	Automatic electronic drive limiter
Operating Temperature	0°C to 40°C (32°F to 104°F)
Operating Humidity	35% to 80%RH (no condensation)
Finish	Panel: ABS resin, black Case: Steel plate, black, paint
Dimensions	264(W) X 94.3(H) X 267.3(D) mm (10.39" X 3.71" X 10.52")
Weight	3.5kg (7.7 lb)
Included Accessories	Volume control cover: YA-920...5, Removable terminal plug (2 pins)...4 Removable terminal plug (3 pins)...2, Removable terminal plug (screw 2 pins)...1 Removable terminal plug (5 pins)...1
Optional Accessories	Rack mounting bracket: MB-1000

Product rear image



Dimensions

