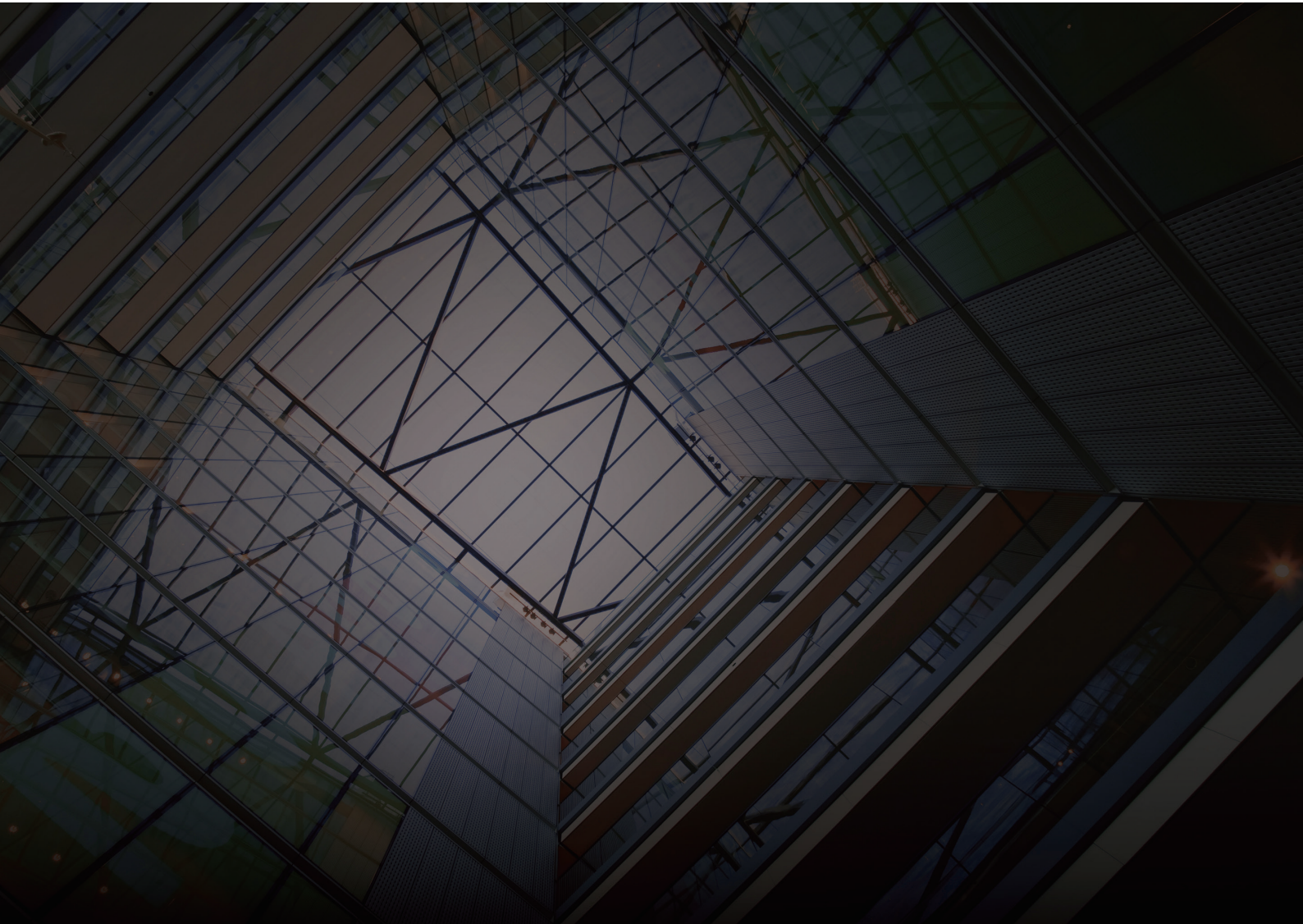


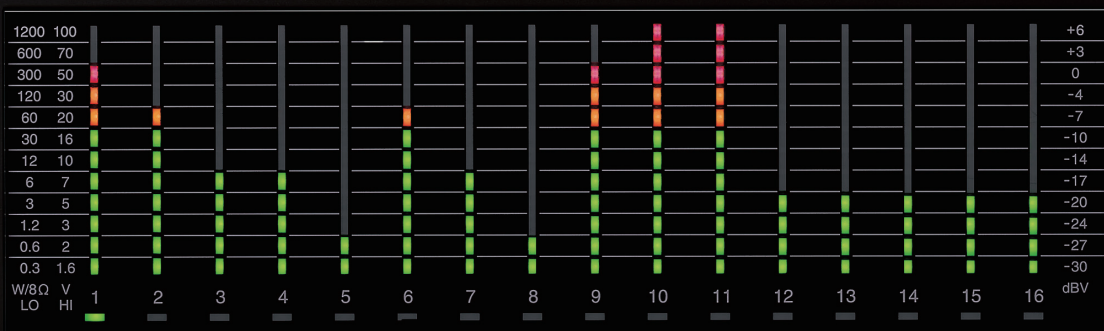


16 Channel Audio Monitor Panel

MP-16



Essential Piece of Your PA System



MP-16

MP-16 is a professional audio monitor panel, which is designed to monitor audio signals within a PA system visually and aurally. It is an essential piece to complete a rack-assembled PA system for supporting reliable system installation, daily services operations, periodical maintenance services and emergency trouble shootings.

Key Features

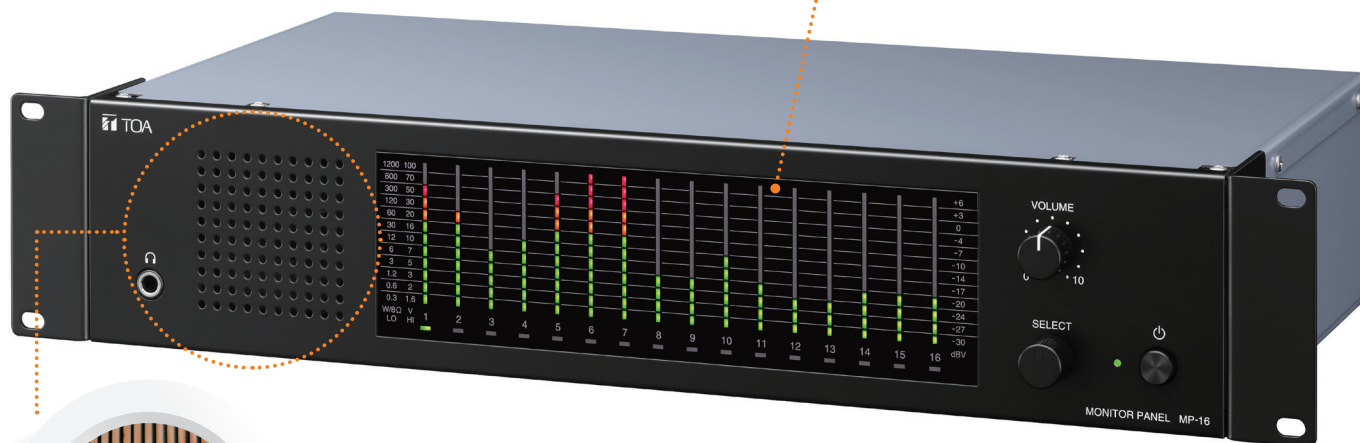
Flexible Input Signals

Each input of 16 channels supports:

- Line level (+6dB)
- Low-z speaker line (Max. 1200W /8Ω)
- Hi-z speaker line (Max. 100V supporting 25/70/100V)

Visual Monitoring

Independent LED meters are available for all 16 channels to visually monitor each audio signal level



Aural Monitoring

1 audio signal out of the 16 channels can be aurally monitored by:
-Built-in speaker / -Optional headphones

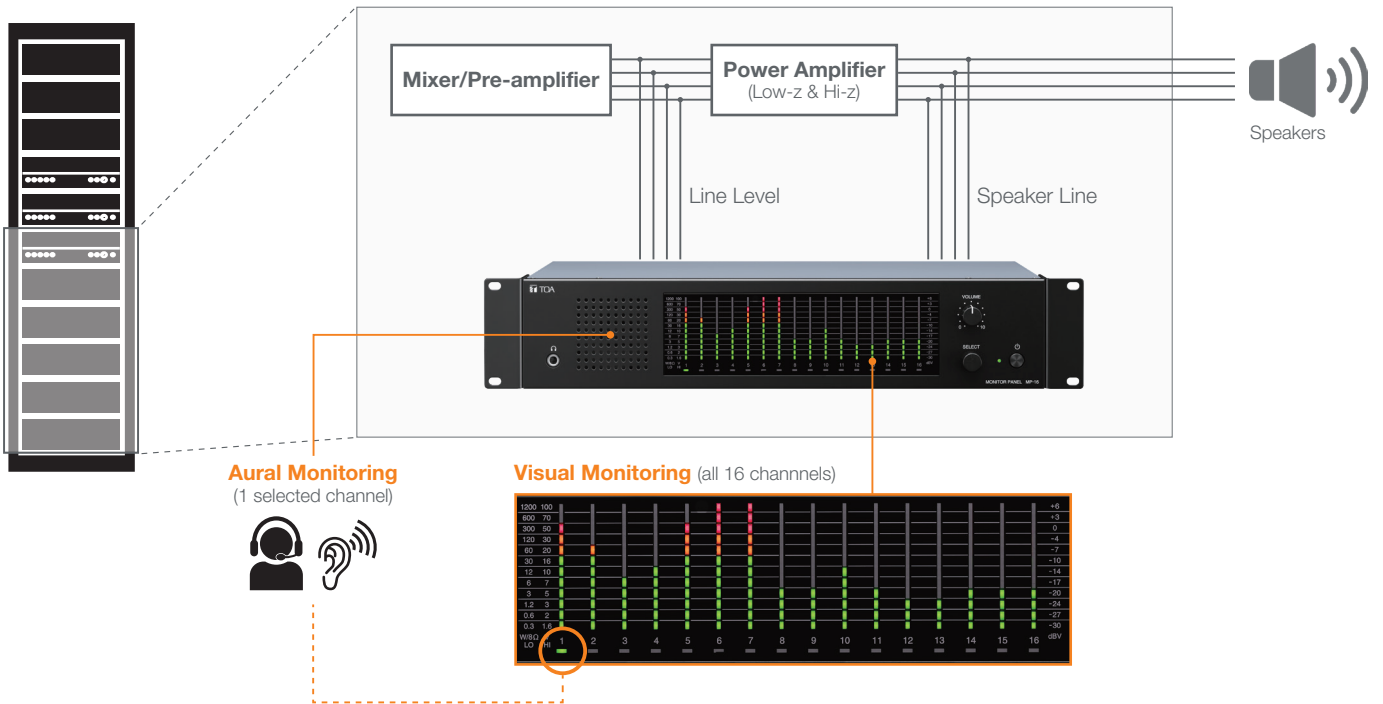
Easy Rack Mounting

Rack mounting hardware is pre-assembled to be quickly mounted on an EIA standard rack (2 unit size)

Direct DC24V Power Input

In addition to a dedicated AC adapter input, direct DC24V input terminal is also available for emergency battery power operation in conjunction with a Voice Evacuation System.

System Diagram



Applications



01. Initial System Installation

Ensure that audio signals are active to complete system installation and configuration process.



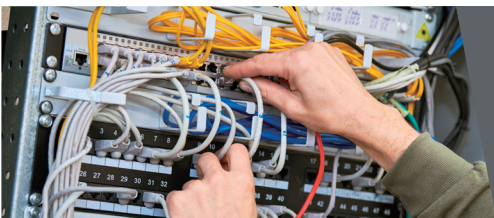
02. Daily Service Operations

The Built-in monitor speaker delivers live audio sounds in the control room.



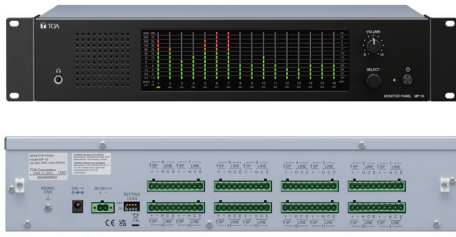
03. Periodical Maintenance Services

Visual and aural monitoring capability supports quick and secure audio system maintenance services.



04. Troubleshooting

Finds out the nature of the problem by checking audio signals to resume the system operation.



- 16 channels audio monitoring
- Visual monitoring with 12-segments LED meters
- Aural monitoring by built-in speaker and optional headphones
- A variety of input capacity: line level, low-z speaker lines and 25/70/100V hi-z speaker lines
- EIA standard rack mounting (2 unit size)
- Dedicated AC adapter input and direct DC24V input terminal

Specifications

	MP-16
Power Source	Supplied from an external 24 V DC (20-33 V) power supply, Removable terminal block (2 pins) or AC adapter AD-246 (option)
Maximum Current Consumption	520 mA
Input	High impedance speaker: Max. 100 V Low impedance speaker: Max. 1200 W (8 Ω) Line: +6 dB (*1)
Output	Speaker Output: Max. 3 W Headphone Output: 8 Ω
Level Display	Meter: 12-segment LED meter x16 Level Indications: 1.6 - 100 V (High impedance speaker) 0.3 - 1200 W (Low impedance speaker) -30 to +6 dB (*1) (Line)
Operating Temperature	0 °C to +40 °C (32 °F to 104 °F)
Operating Humidity	90 %RH or less (no condensation)
Finish	Panel: Pre-coated steel plate, black, 30 % gloss Case: Surface-treated steel plate
Dimensions	482 (W) x 88.4 (H) x 240.8 (D) mm (18.98" x 3.48" x 9.48")
Weight	3.9 kg (8.6 lb)
Accessory	Removable terminal plug (10 pins, input terminal) ... 8, Removable terminal plug (2 pins, power supply) ... 1, Rack mounting screw ... 4
Option	AC adapter: AD-246

(*1) 0 dB = 1 V