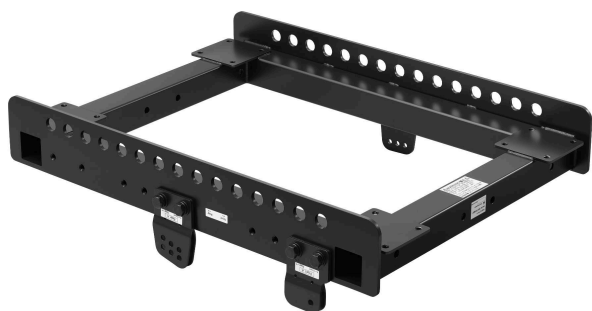


SR-RF8

RIGGING FRAME



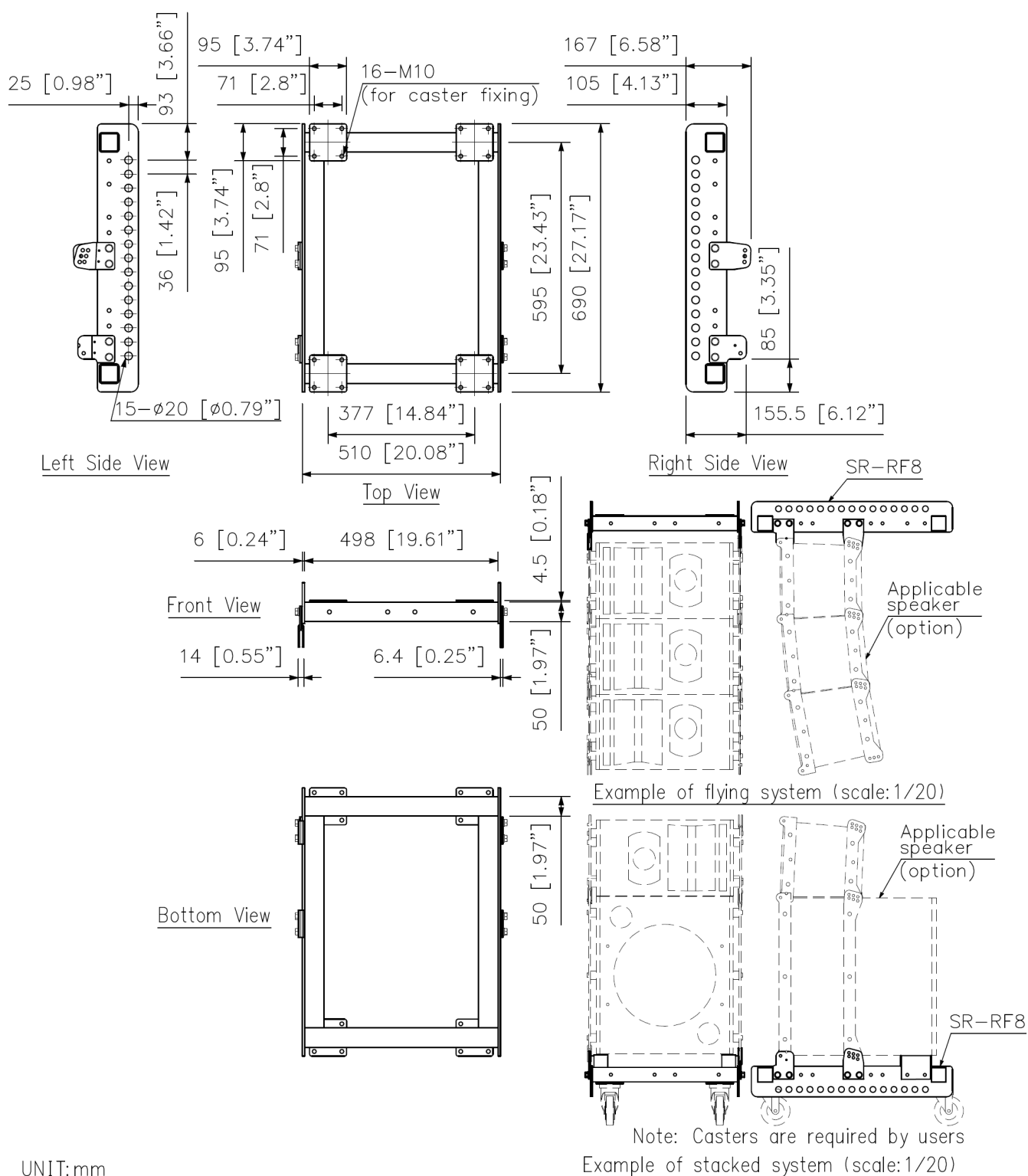
The SR-RF8 Rigging Frame is used for flying or stacking the SR-C8L, SR-C8S, or SR-C15B Line array speakers.

Key features

Specifications

Number of Speakers to be Mounted	Flying: Max. 12 (SR-C158B (option) is counted as 2 pieces.) Stacked system: Max. 8 (SR-C15B (option) is counted as 2 pieces.)
Compatible Speaker	SR-C8L, SR-C8S, SR-C15B
Finish	Steel plate, black, paint
Dimensions	510 (W) x 167 (H) x 690 (D) mm (20.08 x 6.58" x 21.17") (excluding bolt)
Weight	18.5 kg (40.78 lb) (including accessories)
Included Accessories	Plate mounting bolt (M10) ...12, Fixing plate ...4, Sub-woofer receptacle piece ...2
Optional Accessories	Rigging support bracket: SR-SB8 (absolutely needed when stacking 6 or more speakers)

Dimensions



UNIT:mm

A&E specifications

UNDEFINED TEXT